

eccoless®

**Wireless ultrasound probes**



**WALNUT**  
INNOVATIVE VIEWS

## - LINEAR

**B&W ultrasound probe**



## B&W ultrasound probe

**Language: Chinese, English, Russian, Italian, Spanish, Portuguese (Brazil)**

**-Scanning mode: Electronic array**

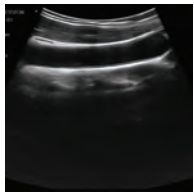
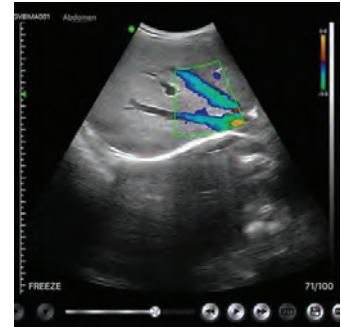
**-Preset application:**

**-Linear probe: Thyroid, Pediatrics, Vascular, Carotid, Breast, MSK**

**-Display mode: B, B/M**

**-Frequency: :**

**Linear probe 7.5 MHz/10.0MHz**



**-Depth:**

**Linear 20mm~100mm**

**-Elements:**

**Linear probe: 128**



**-Measure: Length, Area, Circumference, GA (CRL, BPD, GS, FL, HC, AC), EFW (BPD, FL)**

**-DR: 40-100**

**-Focus Pos: 0.1.2.3**

**-Enh: 0-4**

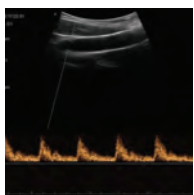
**-Battery working time: : 3.5 hours continuous working to 12h standby**

**-Dimension: 156×60×20mm**

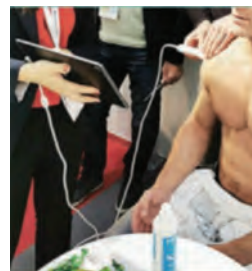
**-Weight: : 270g**

**-Wifi type: : 802.11n/20MHz/5G**

**-Working system: iOS, Android, Windows**



## SCARICA LA NOSTRA APP



ecoless®

Walnut srl  
P.I. 01681860621  
via appia snc | 82010 | San Nicola Manfredi | BN  
quote@thewalnut.it | www.thewalnut.it



**WALNUT**  
INNOVATIVE VIEWS