

eccoless®

Wireless ultrasound probes



WALNUT
INNOVATIVE VIEWS



USB + WIFI

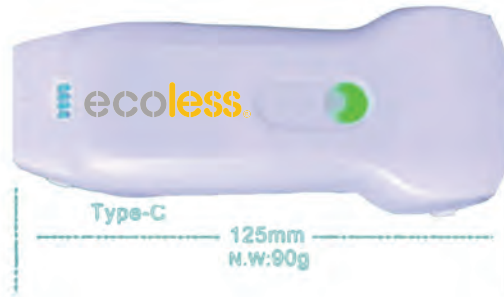
- Doppia testa
- Lineare
- Color Doppler
- Convex
- Cardio
- 3 in 1



**Diagnosi rapida in ogni momento e dovunque:
in ospedale, ambulatorio, pronto soccorso, sala operatoria**

Freq:
7.5/10MHz
Depth:
20-100mm
Footprint:
L25

Linear



Convex + Cardiac

Freq:
2.5/5MHz
3.5/5MHz
Depth:
90-160mm
90-305mm
Radius:
R45

Applicazioni:

**Addome, Tiroide, Nefrologia, Urologia, Muscolo-scheletrico,
Anestesia, Cardiologia, Ostetricia/Ginecologia, Senologia,
Vascolare, Pediatrica, Veterinaria**



USB & WIFI 3in1

**può essere connessa a devices Windows/Android/iOs
Tablet, Smartphone, PC etc...**

- Android/Windows

- iOs



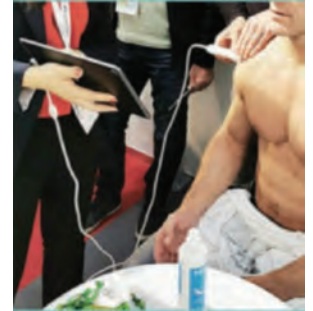
&



Type-C USB



SCARICA LA NOSTRA APP



Software controls:

- supporta editing di scrittura e stampa
- software in italiano, inglese, spagnolo, portoghese (brasiliiano) russo, cinese
- GN (gain), D (depth), ENH (enhancement), DR (dynamic range) F (frequency), FocusPos, PRF, WF, Mode, 8TGC, Biopsy annote page left/ right up/ down

Misurazioni:

Lenght, Area/Circumference, Angle, Trace, DistanceGA (CRL,BPD,GS,FL,HC,AC), EFW (BPD,FL), Heart rate, Time, Distance, Velocity, Heart rate (2), S/D, Depth

Antenna WiFi interna



**Batteria al Litio
2800mAh**

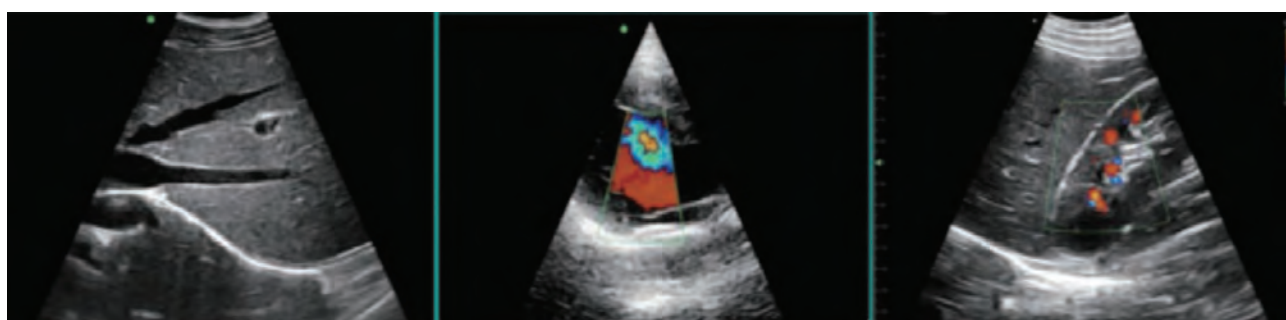
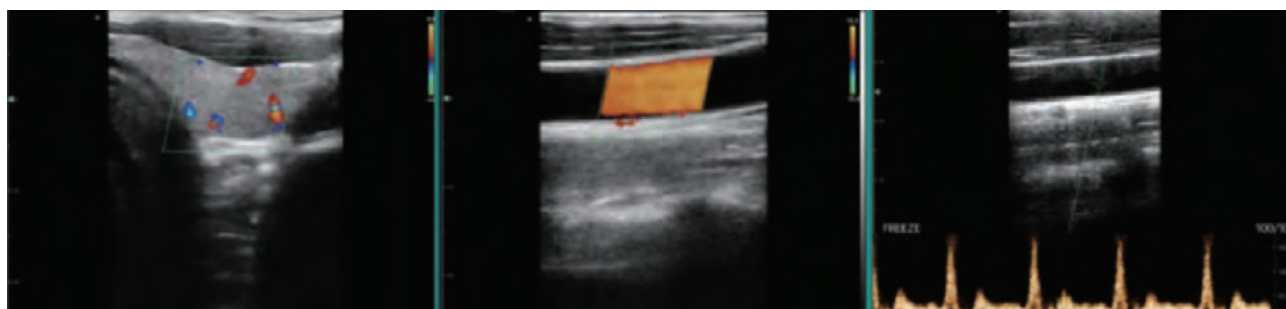
*Working time: ≥3h
Standby time: ≥12h*

**Modes: B, B+M,
Color Doppler, PW,
Power Doppler**

Utilizzabile sotto carica



IMMAGINI CLINICHE



CHIUNQUE

DOVUNQUE

SEMPRE



ecoless®

